

EHP Series

Hydraulic Leveler

Hydraulic 1 hp., 1.15 G.P.M.

25,000; 30,000; 35,000; 40,000; and
45,000lb. Dynamic Capacities

6', 6'6", and 7' Widths
6', 8' and 10' Lengths

Pioneer's EHP Series Levelers - Affordable Hydraulics for Every Jobsite!

Pioneer's EHP Series Leveler offers both strength and ease of operation. Single, rotary switch control provides easy activation and recycling of Leveler either when the truck departs or while the truck is at the dock. The hydraulically operated deck and lip provide smooth, efficient operation of the Leveler. Deck and lip are constructed of 55,000 lb. minimum yield steel tread plate. Lip keepers serve as night locks for security and provide safe cross-traffic support when unit is stored. Dock bumpers and grease fittings on lip hinge are standard with each unit.

Warranty

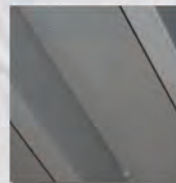
PIONEER offer a 2-year warranty on structural members. A 1-year warranty is provided on the motor pump and miscellaneous parts (including materials, labor, and freight).

Guarantee

PIONEER will provide our standard warranty or match any documented competitive warranty in the industry for comparable models. There is no fine print.



Rugged. Dependable. PIONEER.



PIONEER's solid steel **Structural "C" Channel** offers matchless deck support - providing a 39% greater resistance to elastic bending moments than other industry designs.



Inline Safety Stop guards against *free-fall* in the event of premature truck departure.



Fully **Hydraulic Lip** extension and retraction. Lip automatically closes upon truck departure.

Quality Dock Levelers

Long Lasting

Easy to Install and Operate

Safe

EHP Series

Features & Specifications

All PIONEER Levelers meet or exceed the performance requirements of CS202-56., O.S.H.A., and A.N.S.I. MH14.1 - 1984

Durability

- Deck and lip are constructed of 55,00 lb. Minimum Yield Steel Tread Plate.
- Deck support beams are Solid Steel Structural "C" Channel, fully welded to Full-width Header Plate at the front of the Leveler.
- Regenerative Main and Lip Cylinders provide dual-sided lubrication for all hydraulic seals. Main cylinder is 3" in diameter with a 2" ram.
- Extra Heavy Rear Angle with Strategically Placed Gussets provides maximum structural support and frame strength.
- Continuous Hinge Design with Grease Fittings included as standard with each unit.
- Molded Bumpers included to protect dock face and Leveler from truck damage.

Easy Installation

- Power is available in 1 ph. (115) or (230) volts; or 3 ph. (208), (230), or (460) volts. All 60HZ units.
- Custom Rear Angle is two inches wider than the Leveler, providing extra area to weld at both ends.
- Front and rear Forklift Slots provide easy access for maneuvering and installation.
- Side Ports allow unit to be suspended and lowered into pit from dock floor.

Safety

- Hydraulic system includes an Inline Safety Stop to prevent free-fall in the event the unit suddenly becomes unsupported.
- Power unit is totally enclosed, factory wired, and tested per specifications. All 60HZ units. Remote box meets N.E.M.A. 4X requirements.
- Lip Keepers serve as night locks for security, and provide safe Cross-traffic Support when unit is stored.
- Working Range Toe Guards protect workers from injury during loading and unloading. Optional Full Range Toe Guards Available.

PIONEER offers a complete line of finely crafted, technologically advanced loading dock equipment, including Mechanical and Hydraulic Pit Levelers, Edge-of-Dock and Hydraulic Top of Dock Levelers, Portable Dock boards, Vehicle Restraints, Dock Seals & Shelters, High Speed Fabric Roll-Up Doors, and other quality accessories. Just call us toll free for personal, professional customer assistance and responses to all of your product needs.

Simple Operation

All Operations are controlled from a single, prewired Wall Mounted Remote. Leveler can be recycled with the truck in position, or after the truck departs.

Hydraulic Lip extends after main cylinder raises the platform. Platform automatically descends upon truck departure.

Operating Range of 12" above and 12" below dock.



Rugged. Dependable. PIONEER.

Dealer Locations

Call Dick Jones Sales 800-441-9955