



# Caster and Wheel Corporation

TO ORDER OR INQUIRE PLEASE CONTACT  
DICK JONES SALES, INC.  
258 Baltimore Street PO Box 141  
Hanover, PA 17331  
800-441-9955

## MODEL 5500 EXTREME WEIGHT TRIPOD DOLLY

Ahhh! *That* problem move: too much weight for small dollies - not enough room for fork lifts, cranes or "pull" dollies. Bond found the solution: *The Extreme Weight Dolly*. Bond's largest weight management dolly is specifically designed for moving heavier items in smaller spaces and over rougher flooring. These are compact triangular shaped dollies with a cup center; often called cup dollies or cup casters. One dolly is placed under each post or corner of the article you intend to move; once all dollies are placed you simply roll your article through entry ways, down the street, onto the truck, or across the room! The special swivel wheels and tripod wheel arrangement allow the article to be moved in any direction; where you want them too safely and securely.

### MODEL 5500 EXTREME WEIGHT DOLLY

CONSTRUCTION: \$702.00/ea

**BODY:** 3/8" Thick steel plate with 6" inside diameter straight sided well with a powder coat finish. Well clearance is 1-1/2" from the floor as our standard but can we change per your specifications.

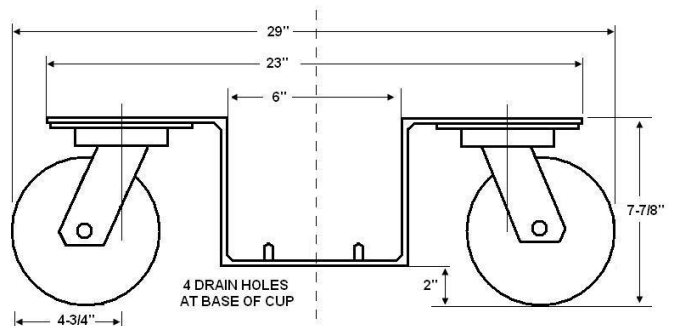
**CASTERS:** Super duty kingpin-less casters are chosen for the durability of the kingpin-less design. The weakest link in a heavy duty standard caster is kingpin failure causing the caster to break at the raceway.

**WHEELS:** 6" diameter by 3" width wheels are made of durable 3/4" thick polyurethane tread with a heavy duty cast iron center and tapered bearings. The tread is 65 Shore D hardness polyurethane chemically bonded to the wheel center to assure durability in heavy duty service. The polyurethane is non-marking, non-staining and floor protective. It resists oil, grease, water and most solvents.

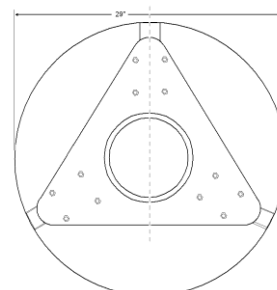
**WEIGHT CAPACITY:** 3500 lbs per dolly

**TEMPERATURE RANGE:** -45 ° to 180 ° F.

**WEIGHT:** 90 lbs. each



FRONT VIEW



TOP VIEW



# Caster and Wheel Corporation

TO ORDER OR INQUIRE PLEASE CONTACT  
DICK JONES SALES, INC.  
258 Baltimore Street PO Box 141  
Hanover, PA 17331  
800-441-9955

[dickjones@dickjonessales.com](mailto:dickjones@dickjonessales.com)

## MODEL 5500 DU

**EXTREME WEIGHT DOLLY with Ductile Iron wheels \$777.00/ea**

### CONSTRUCTION:

**BODY:** 3/8" Thick steel plate with 6" inside diameter straight sided well with a powder coat finish. Well clearance is 1-1/2" from the floor as our standard but can we change per your specifications.

**CASTERS:** Super duty kingpin-less casters are chosen for their durability especially in abusive or demanding shock load applications.

**WHEELS:** 6" diameter by 3" width wheels made of ductile iron with rugged tapered bearings. Ductile iron wheels are resistant to breakage, chipping and cracking, even under severe impact loading.



**WEIGHT CAPACITY:** 3500 lbs per dolly

**TEMPERATURE RANGE:** -45 ° to 180 ° F.

**WEIGHT:** 105 lbs. each

## MODEL 5500 EZ \$634.00/ea

**EXTREME WEIGHT DOLLY with lighter duty crowned polyurethane on steel wheels**

### CONSTRUCTION:

**BODY:** 3/8" Thick steel plate with 6" inside diameter straight sided well with a powder coat finish. Well clearance is 1-1/2" from the floor as our standard but can we change per your specifications.

**CASTERS:** Super duty kingpin-less casters are chosen for their durability especially in abusive or demanding shock load applications.

**WHEELS:** 6" diameter by 3" width wheels made of quiet riding and durable polyurethane tread with a cast iron center and tapered bearings. The slightly crowned tread is 95 Shore A hardness polyurethane. The polyurethane is non-marking, non-staining and floor protective.



**WEIGHT CAPACITY:** 3500 lbs per dolly

**TEMPERATURE RANGE:** -45 ° to 180 ° F.

**WEIGHT:** 85 lbs. each