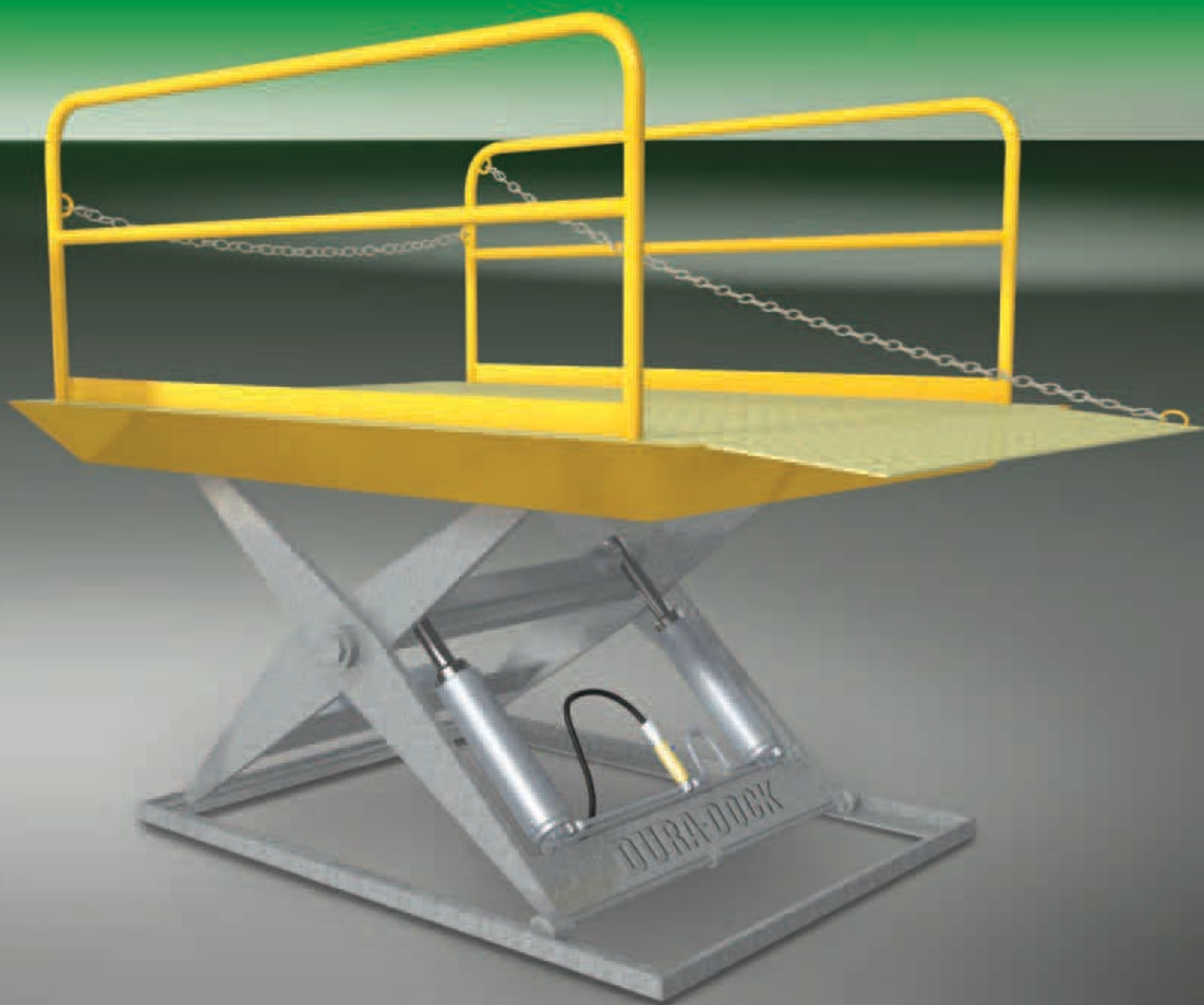


LOADING DOCK LIFTS



SOUTHWORTH

Southworth Dock Lifts

Transfer Loads from Any Truck Bed Height to Any Loading Dock Height... Even Ground Level!



M - Series dock lift featuring *Dura-Dock™* weatherproof construction.

The Advantages of a Southworth Dock Lift

Dock lifts are more versatile than dock levelers, faster than manual loading and unloading, safer than ramps and inclines and less expensive than recessed truck wells. That's why every building should have a Southworth Dock Lift.

A Model for Every Application

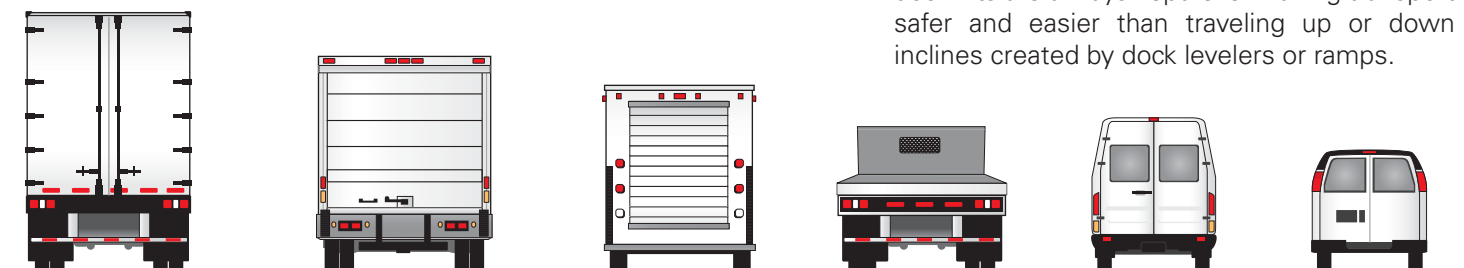
Southworth offers seven standard dock lift models with capacities from 5,000 to 20,000 lbs., platform sizes up to 8' x 12' and a variety of installation configurations to accommodate any loading dock requirement. Models featuring an "M" designation are built for use with two wheel dollies, hand carts, and hand pallet trucks. "H" model designations can be used with powered devices like powered pallet trucks, counterbalanced stackers and fork lift trucks.



H - Series dock lift for heavy loads (over 10,000 lbs.) and/or forklift accessibility.

The Fast, Safe, Easy Way to Service Any Truck

With nearly 5' of travel range, dock lifts can service any type of truck from vans and pickups to tractor trailers and container trucks. Loads on dock lifts are always kept level making transport safer and easier than traveling up or down inclines created by dock levelers or ramps.





Rugged Weatherproof Construction

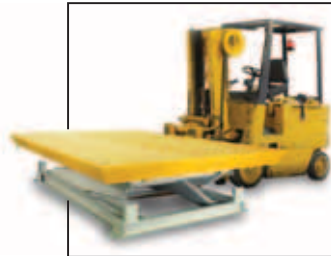
All Southworth Dock Lifts are manufactured with structurally reinforced heavy steel plate platforms to minimize deflection. Wide base design provides increased rigidity to create the industry's most stable dock lift. **Model DL5-59 and DL6-59 DURA-DOCK™ dock lifts feature corrosion resistant galvanized base and legs as standard**, resulting in longer trouble-free service even in hostile environments.



Galvanized Base and Legs are Standard on DL5-59 and DL6-59 Dura-Dock Models

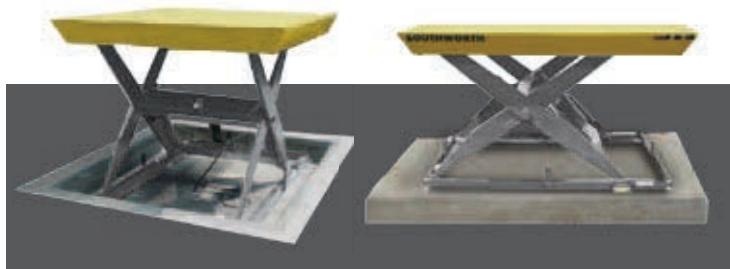
Installation Package

To make the installation process as easy as possible, Southworth Dock Lifts ship fully assembled and include: 20' of coil cord on a push-button pendant control, and power unit reservoir filled with hydraulic oil.



Pit or Top of Ground Mounting

Southworth Dock Lifts can be recessed in a pit for ground level lowering or surface mounted on a concrete pad (requires optional ramp for grade level access).



Features and Options

Mechanical Features

- Bevel toe guard platform
- Diamond tread deck for improved traction
- Diamond tread hinged throw-over plate with lifting chain
- Removable steel handrails with mid-rail, 4" side kick plate and safety chain
- Maintenance strut supports lift for servicing
- Removable lifting eyes for ease of installation
- Conforms to ANSI MH29.1 Standards

Electrical/Hydraulic Features

- Pre-wired power unit and control panel
- Weatherproof NEMA 4 push-button control pendant with 20' coil cord
- Oversized, low pressure hydraulic cylinders
- Heavy-Duty hoses with burst strength 4x greater than operating pressure
- Flow control valve with adjustable lowering time
- Excess flow protection for controlled descent of lift in the unlikely event of a hydraulic line rupture
- Standard Voltages: 208/230/460V - 3 Phase

Options and Accessories

- Grade level access ramp (for above ground lifts)
- Accordion skirting or roller shade
- NEMA 4 enclosures
- Environmentally friendly biodegradable hydraulic fluid (standard on Dura-Dock models)
- Mechanical wheel chock to prevent fork truck from inadvertently rolling off lift while elevated
- Upper travel limit switch - mounted and wired
- Warning bell with flashing light
- Special paint finishes and custom colors
- Corrosion resistant coatings (standard on Dura-Dock models)
- Other bridge plate sizes available

Specifications

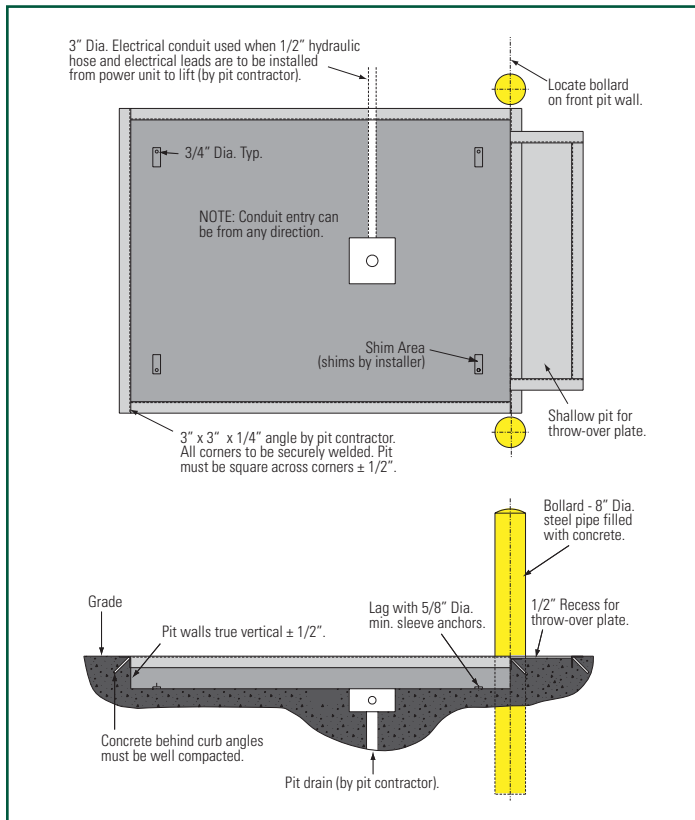
M-Series - Medium-Duty Dock Lifts

Model	Lift Capacity	Roll-Over Capacity	Standard Platform	Maximum Platform	Vertical Travel	Low Height	Throw-Over Plate	Rise Time	Motor	Approx. Weight
DL 5-59M	5,000 lbs	10,000 lbs	6' x 8'	8' x 10'	59"	8"	18" x 60"	27 sec.	3.2 HP	2,800 lbs
DL 6-59M	6,000 lbs	10,000 lbs	6' x 8'	8' x 10'	59"	8"	18" x 60"	27 sec.	3.2 HP	2,900 lbs
Model DL5-59M and DL6-59M Dock Lifts feature Southworth's exclusive DURADOCK™ galvanized base and legs construction										
DL 8-59M	8,000 lbs	10,000 lbs	6' x 8'	8' x 10'	59"	10"	18" x 60"	42 sec.	3.2 HP	3,200 lbs

H-Series - Heavy-Duty Dock Lifts

DL 10-59H	10,000 lbs	10,000 lbs	6' x 10'	8' x 12'	59"	16"	18" x 60"	34 sec.	5 HP	5,000 lbs
DL 12-59H	12,000 lbs	12,000 lbs	6' x 10'	8' x 12'	59"	16"	18" x 60"	36 sec.	5 HP	5,200 lbs
DL 16-59H	16,000 lbs	16,000 lbs	6' x 10'	8' x 12'	59"	16"	18" x 60"	50 sec.	5 HP	5,500 lbs
DL 20-59H	20,000 lbs	20,000 lbs	6' x 11'	8' x 12'	59"	22"	18" x 60"	60 sec.	5 HP	7,900 lbs

Typical Pit Plan

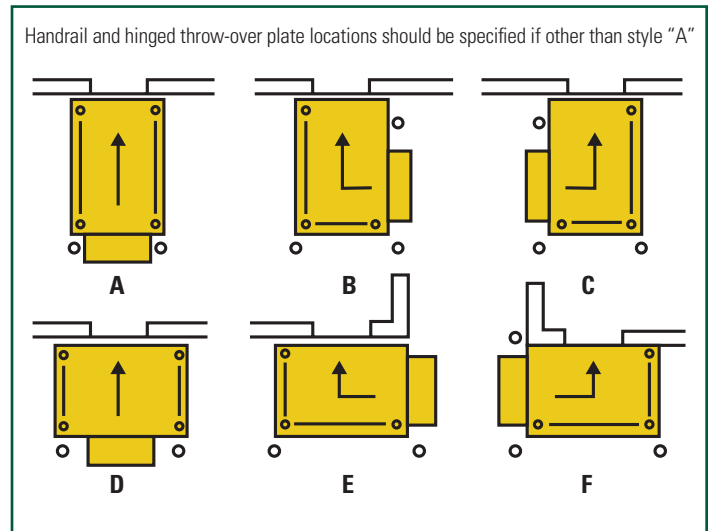


Manufacturer's Warranty

All Southworth Dock Lifts carry a full two year warranty on parts and labor, and a 10 year structural.

SOUTHWORTH
We'll Show You How

Transfer Arrangements



Furnished by Southworth

- Pit plans are forwarded upon receipt of order
- Installation and service manual forwarded with dock lift

Work to be done by Owner's Contractor

- Unloading equipment at time of delivery
- All electrical work including wall disconnect switch
- Concrete work, building modifications and excavation
- Underground piping, conduit, angle framing to pit, embedded items, shims, lag bolts, and sump drain
- Supply hydraulic connecting hose or pipe from power unit to pit sump (see Southworth Pit Plan for details)